

West Long Branch School District Budget 2023-2024

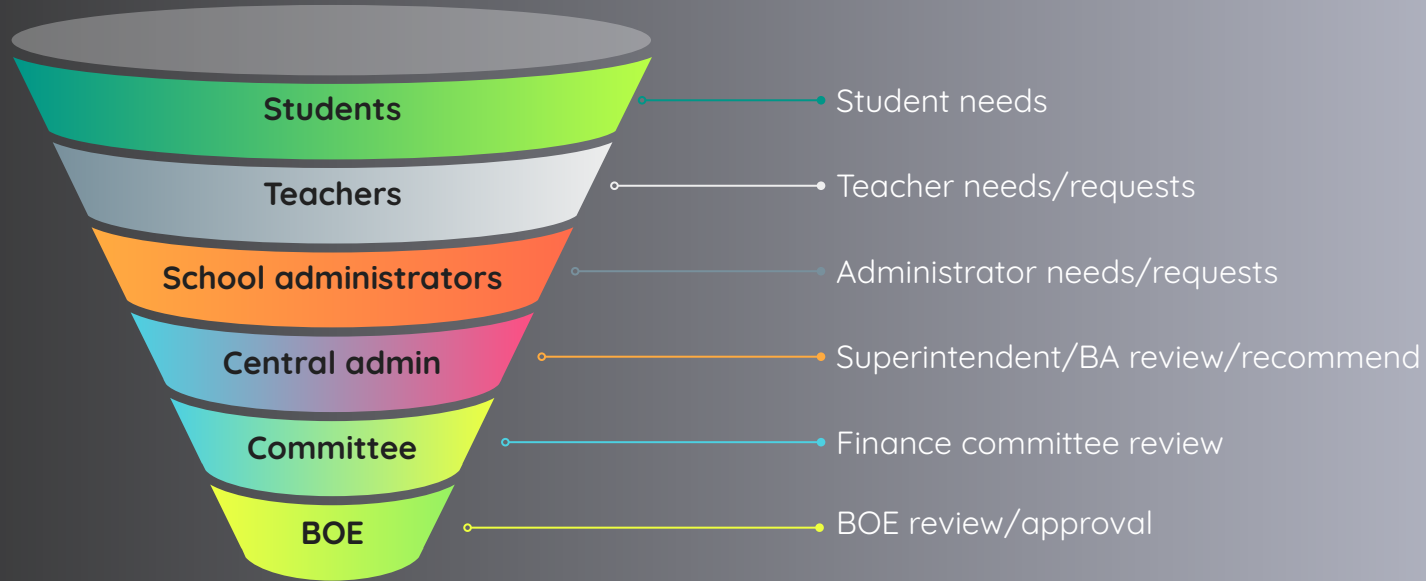


What is a budget?

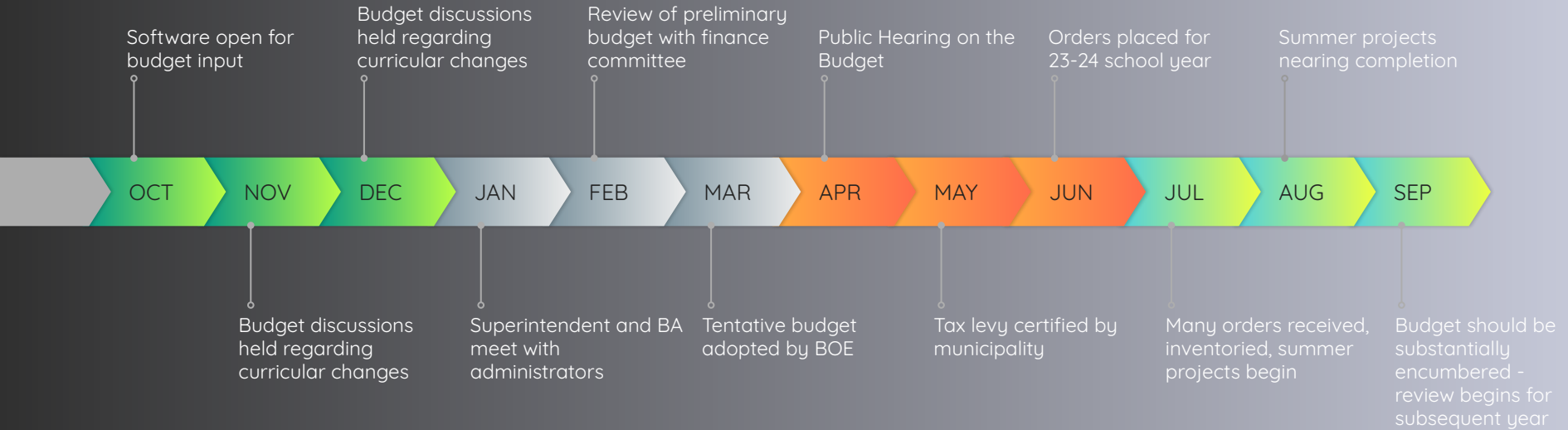
- Planned expenses
- Expected revenue
- Organizational plan in monetary terms
- Financial expression of needs & priorities



Budget Process



Timeline



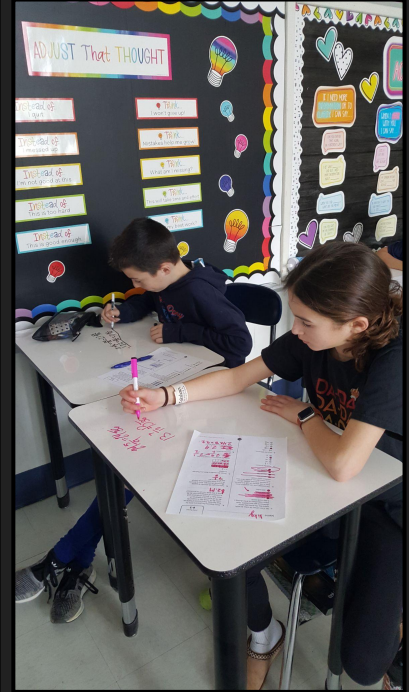
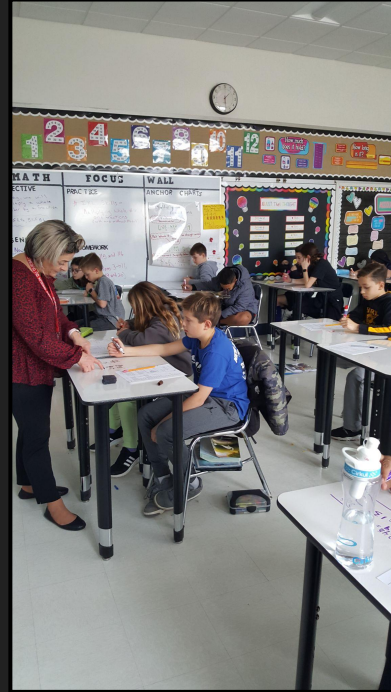
BME Highlights

- Sustain current staffing levels
- Second year of full IXL Benchmark implementation
- Expansion of flexible seating
- Implementation of new ELA program



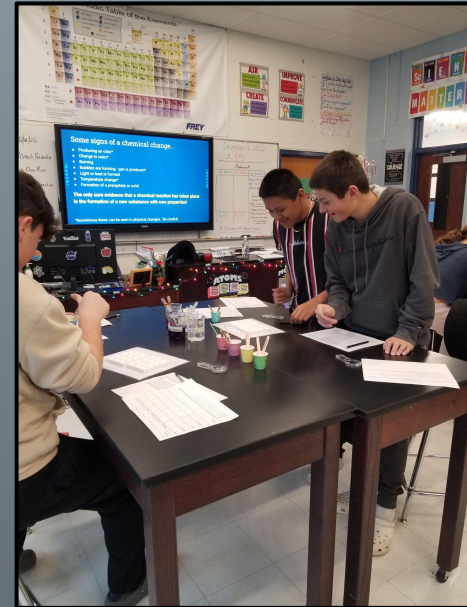
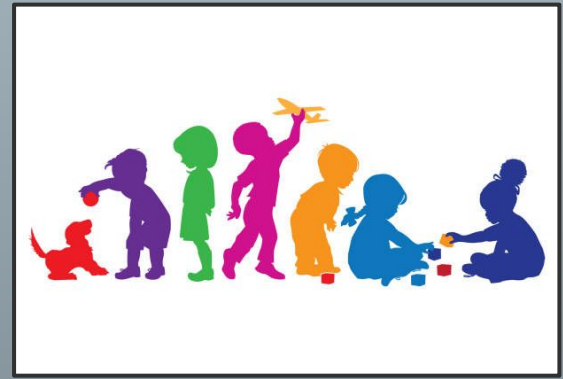
FAS Highlights

- ★ Sustain current staffing levels
- ★ Second year of IXL
Benchmark implementation
- ★ Expansion of flexible seating,
new stools for labs
- ★ Supplemental digital
platforms
- ★ Implementation of new ELA
program



Other Budget Highlights

- Additional preschool classroom at BME
- Security camera upgrades
- Continued rollout of interactive displays
- Gymnasium vestibule reconstruction
- Replacement of ejector pumps in FAS



GENERAL FUND	2022-2023	2023-2024	Difference	% Change
Revenues				
Tax Levy	\$ 10,660,044	\$ 10,873,245	\$ 213,201	2.0%
State Aid	797,967	869,380	71,413	8.2%
Tuition	642,572	957,920	315,348	32.9%
Surplus	394,851	146,540	(248,311)	-169.4%
Legal Reserves	337,500	24,600	(312,900)	-1272.0%
Miscellaneous	48,753	60,790	12,037	19.8%
Total Revenues	<u>\$ 12,881,687</u>	<u>\$ 12,932,475</u>	<u>\$ 50,788</u>	0.4%
Expenditures				
Salary & benefits	\$ 8,706,559	\$ 8,804,342	\$ 97,783	1.1%
Contracted services (300-500)	3,030,063	3,277,654	247,591	7.6%
Supplies	576,528	559,890	(16,638)	-3.0%
Equipment	47,456	21,000	(26,456)	-126.0%
Other (Dues, admission fees, etc)	63,356	67,202	3,846	5.7%
Transfers	-	202,387	202,387	-100.0%
Capital projects	457,725	-	(457,725)	100.0%
Total Expenditures	<u>\$ 12,881,687</u>	<u>\$ 12,932,475</u>	<u>\$ 50,788</u>	0.4%

Thank you!

